

# BULLETIN

JULY 29, 2024

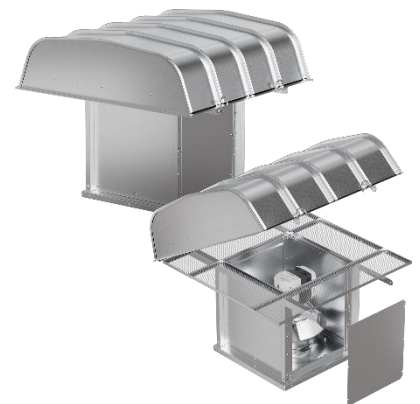
TO: All Greenheck Representatives  
FROM: Mike Bump  
Sr. Application Engineer  
SUBJECT: RSQ – New Product Release



Greenheck is excited to announce model RSQ will be available with the August 5<sup>th</sup> release of CAPS®. Model RSQ provides a unique combination of installation flexibility, ease of service, high efficiency, and low sound levels. A variety of options are available including washable aluminum filters on supply configurations. These fans deliver competitive advantages in a wide range of applications.

#### Common applications

- Ducted or unducted building supply and exhaust at low to medium pressures (less than 3 in. wg)
- Stairwell/elevator shaft pressurization
- General untempered building supply
- High Wind certification coming soon!



#### Features

- 12 direct drive sizes, 7 through 33
- Performance up to 27,100 cfm for supply and 25,200 cfm for exhaust and up to 3 in. wg
- Mixed flow wheel reduces sound and footprint while improving efficiency
- Standard birdscreen guarding with optional washable aluminum filters on supply configurations
- Standard with mounted and wired NEMA 3 disconnects
- Vari-Green® motor options available on all sizes, up to 10 hp

#### Model RSQ replaces models RSF and LB

- Replaced models targeted for obsolescence within a year
- We encourage updating specifications referencing these legacy models to the new RSQ

For more information on our RSQ offering please visit our [website](#). As always, do not hesitate to contact the Inline team at [aifans@greenheck.com](mailto:aifans@greenheck.com) with any questions.