

## Application

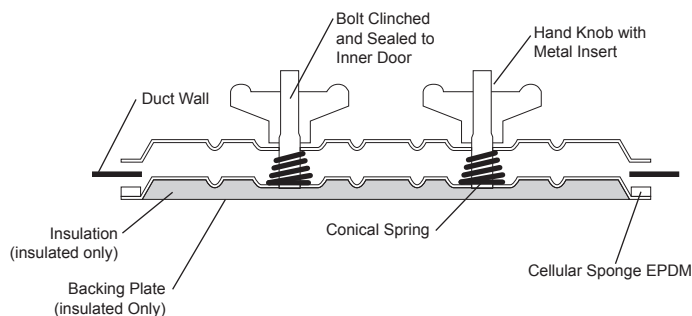
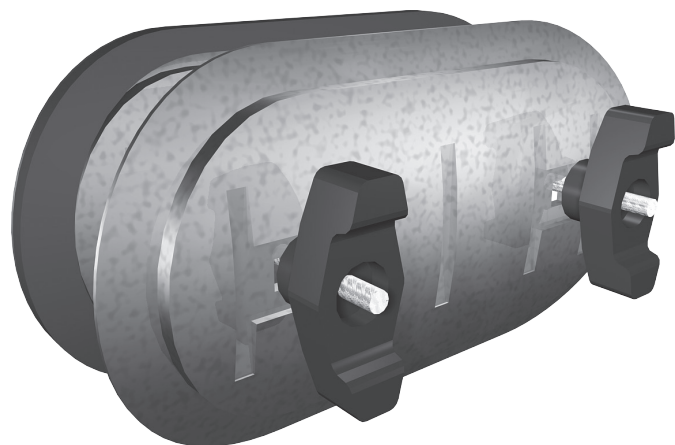
Greenheck round duct access doors provide a durable, practical and inexpensive means of gaining access to components inside the ductwork. Round Duct access door provides a solid leakage proof door that is simple to install. This access door has been tested to 20 in. wg and negative 10 in. wg with no leakage noted.

## Construction

	Standard
<b>Panels</b>	Round duct access door consist of three layers of precision, stamped, hot-dipped galvanized steel. Standard access door is non-insulated. Insulated door is optional.
<b>Gasket</b>	Cellular sponge EPDM. The gasket is permanently bonded to the inside of the door to eliminate leakage.
<b>Springs</b>	Conical springs between the two plates provided for easy installation.
<b>Knobs</b>	High impact plastic knobs are designed to avoid stripping and allow a tool-free operation.

## Installation

Easy installation. Template is provided for the exact size duct opening required.



Door Size in. (mm)	Duct Sizes in. (mm)	Not Insulated	Insulated
8.625 x 4.188 (219 x 106)	6 - 7 (152 x 178)	✓	✓
8.625 x 4.25 (219 x 108)	8 - 9 (203 - 229)	✓	✓
8.625 x 4.313 (219 x 110)	10 (254)	✓	✓
8.625 x 4.375 (219 x 111)	12-14 (305-356)	✓	✓
13 x 8.375 (330 x 213)	16 (406)	✓	✓
13 x 8.5 (330 x 216)	18 (457)	✓	✓
12 x 8 (305 x 203)	19 - 22 (483 - 559)		✓
16 x 12 (406 x 305)	23-24 (584 - 610)		✓

## Document Links



[WARRANTY](#)



[SELECTION GUIDE](#)



[SPECIFICATIONS](#)