

Application

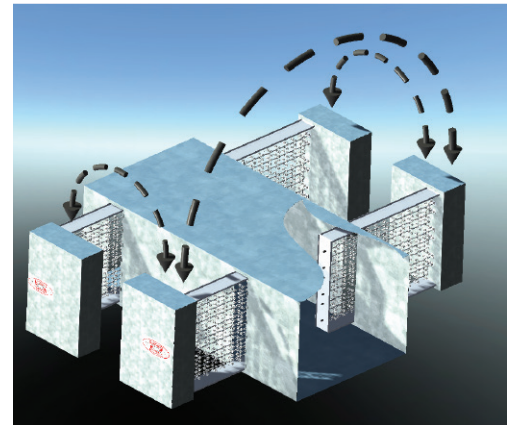
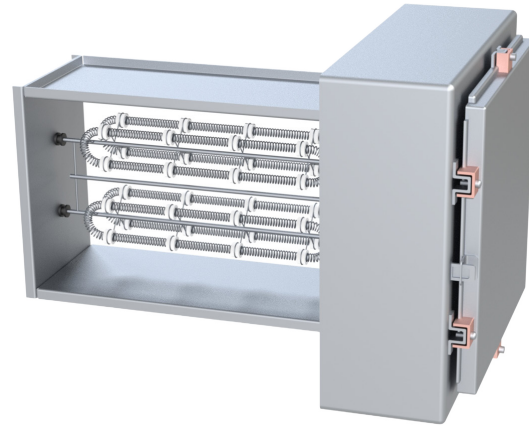
The IDHE-O is a duct heater that is UL listed for outdoor applications. This duct heater can be mounted in multiple positions like the IDHE. The control cabinet is offset from the heating elements similar to traditional heaters. However, the IDHE-O affords the installer the flexibility to position the offset on the left or right as preferred.

The IDHE-O has the following standard features:

- UL listed for Outdoor Applications
- 50/60 Hz compatibility
- Zero clearance rating
- Recessed control box
- Power and control terminal boards
- Automatic reset thermal safety switch for primary over temperature protection
- Heavy gauge G60 construction

Individual maximum capacities are dependent on voltage/phase, control type, and heater dimensions.

Absolute maximum capacity: 478.8 kW



* The Greenheck model IDHE-O duct heater is universally configured to allow airflow in either direction in all mounting orientations.

Construction

	Standard	Optional
Airflow Direction	Universal	-
Contactors	Magnetic	-
Control Box Offset	Universal	-
Control Voltage	24 Vac	-
Element Wire	Standard	80/20
Heater Control	Stage	SCR, Vernier SCR*
Heater Type	Slip in**	-
Heater Voltage/Phase	120/1	208/1, 208/3, 240/1, 240/3, 277/1, 480/1, 480/3
Material	Galvanized Steel	-
Recess (in.)	1	-
Control Transformer	Unfused	Fused, None
Deration (kW)	None	.035, .025
Power Fusing	Required	-

* Vernier SCR is required in heaters greater than 48 amps to comply with NEC requirements.

** Slip in heaters are 1/8 in. (3 mm) undersized for the width and 1/4 in. (6 mm) undersized for the the height.

Options available:

- Airflow switch (adjustable or fixed set point)
- Disconnect switch with door interlock
- 80/20 element wire
- De-rated coils
- Recess for internally insulated ducts
- Stainless steel hardware
- Time delay relay - delay heater or delay stages

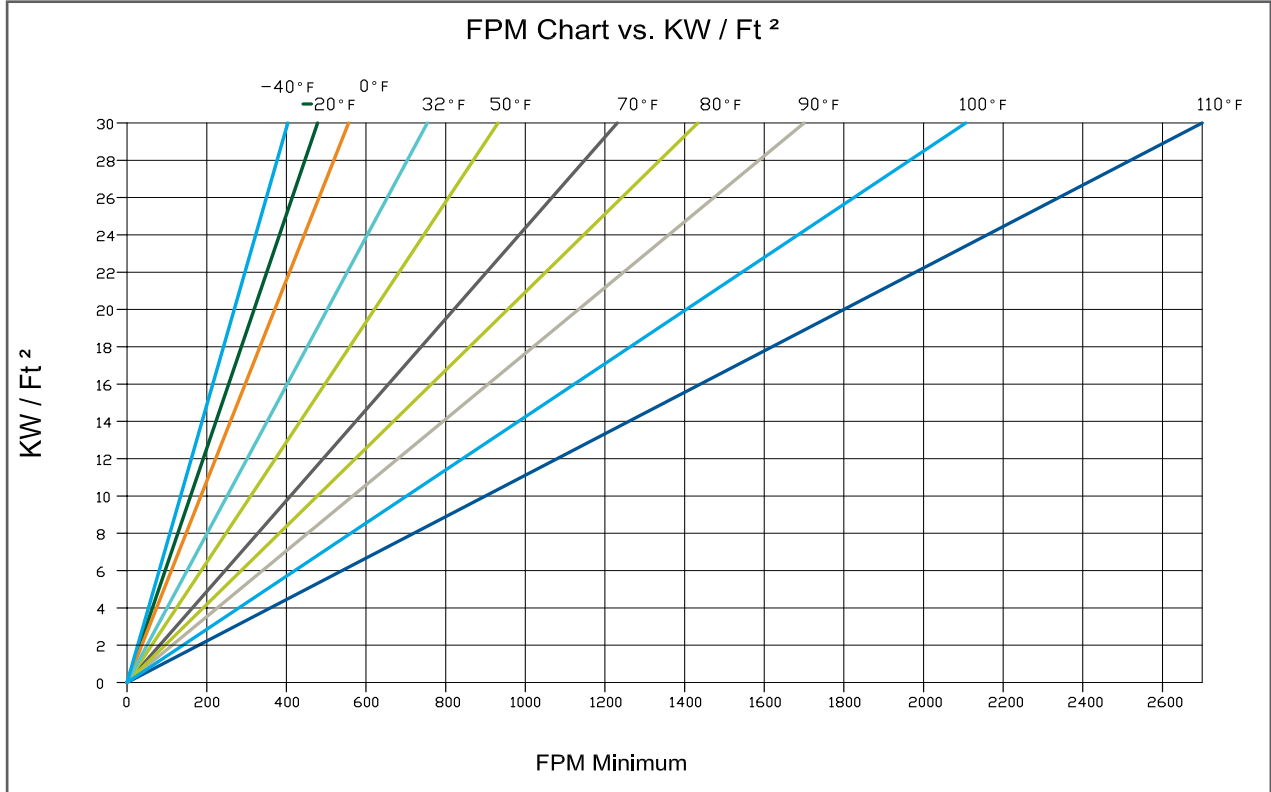
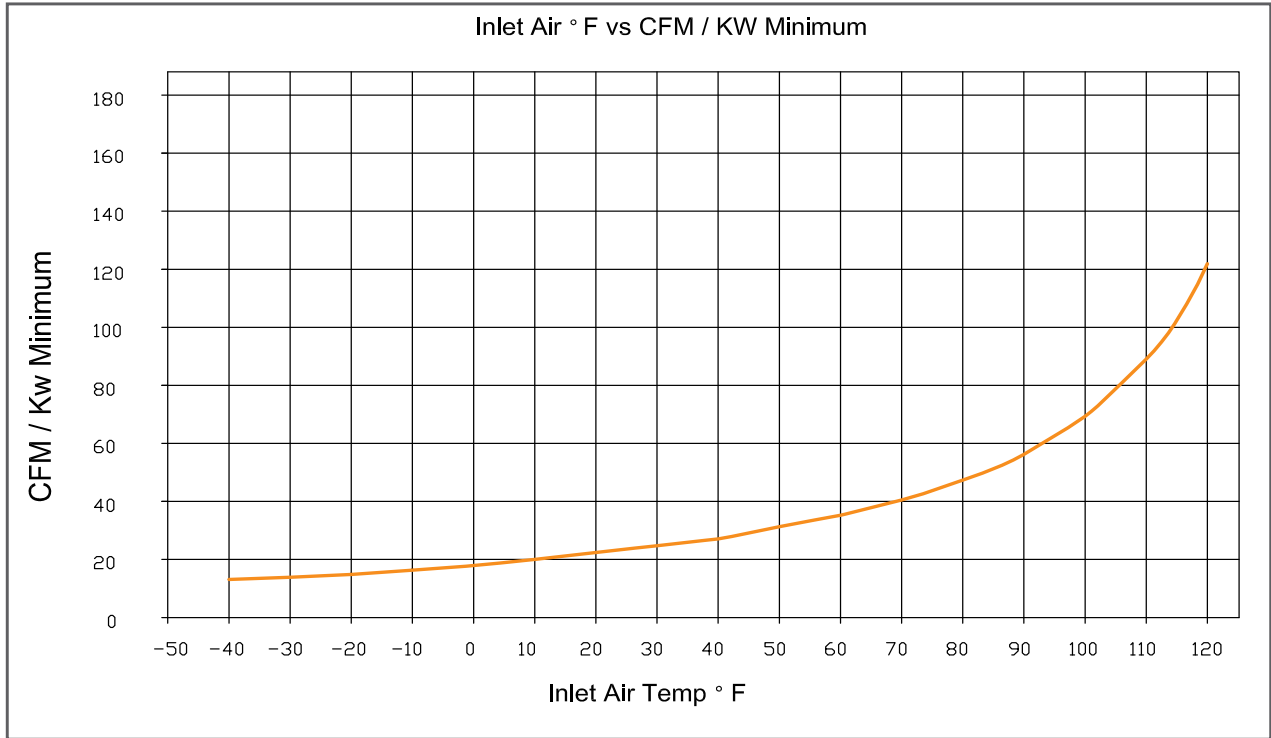
Size Limitations

W x H	Minimum Size	Maximum Size
Inches	8 x 8	120 x 58
mm	203 x 203	3048 x 1473

* Consult factory for heights larger than 90 in. (2286mm)

IDHE: Air Flow Requirements

Minimum Air Velocity: See charts below
Maximum Inlet Air Temp: 110°F
Maximum Heater KW: 30 KW per Square Foot of Duct Cross Section





[INSTALLATION](#)



[TRIFOLD](#)



[SELECTION GUIDE](#)



[SPECIFICATIONS](#)



[WARRANTY](#)