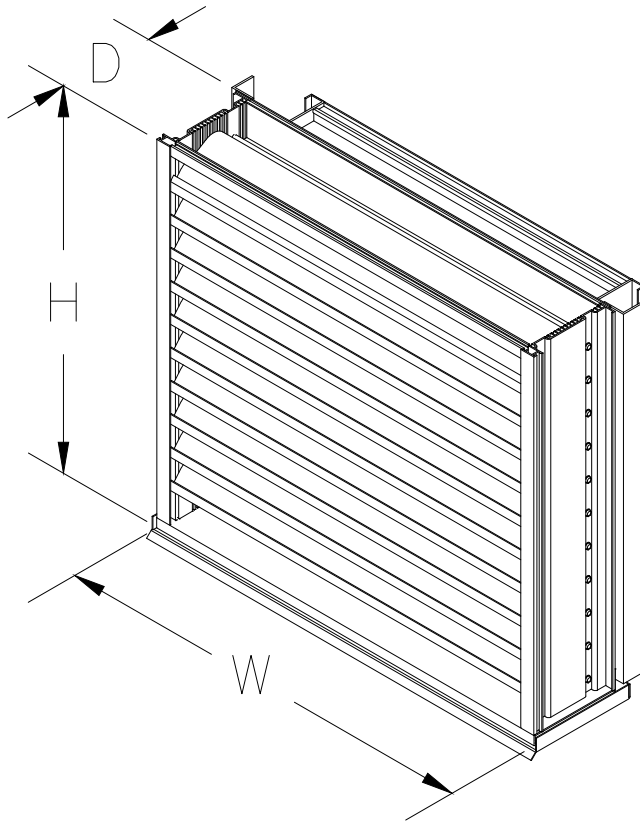


Installation, Operation and Maintenance Manual

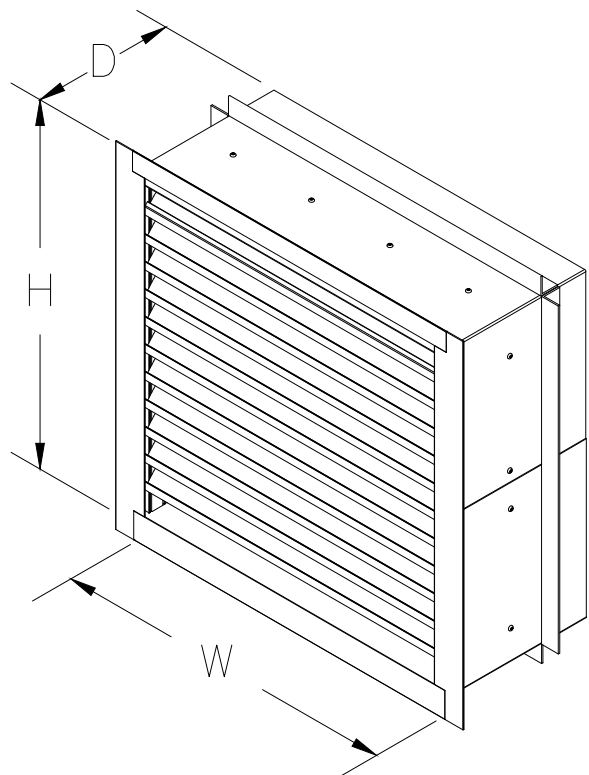
Please read and save these instructions for future reference. Read carefully before attempting to assemble, install, operate or maintain the product described. Protect yourself and others by observing all safety information. Failure to comply with these instructions will result in voiding of the product warranty and may result in personal injury and/or property damage.

Maximum Wind-load: +/-150 PSF

Channel Installation



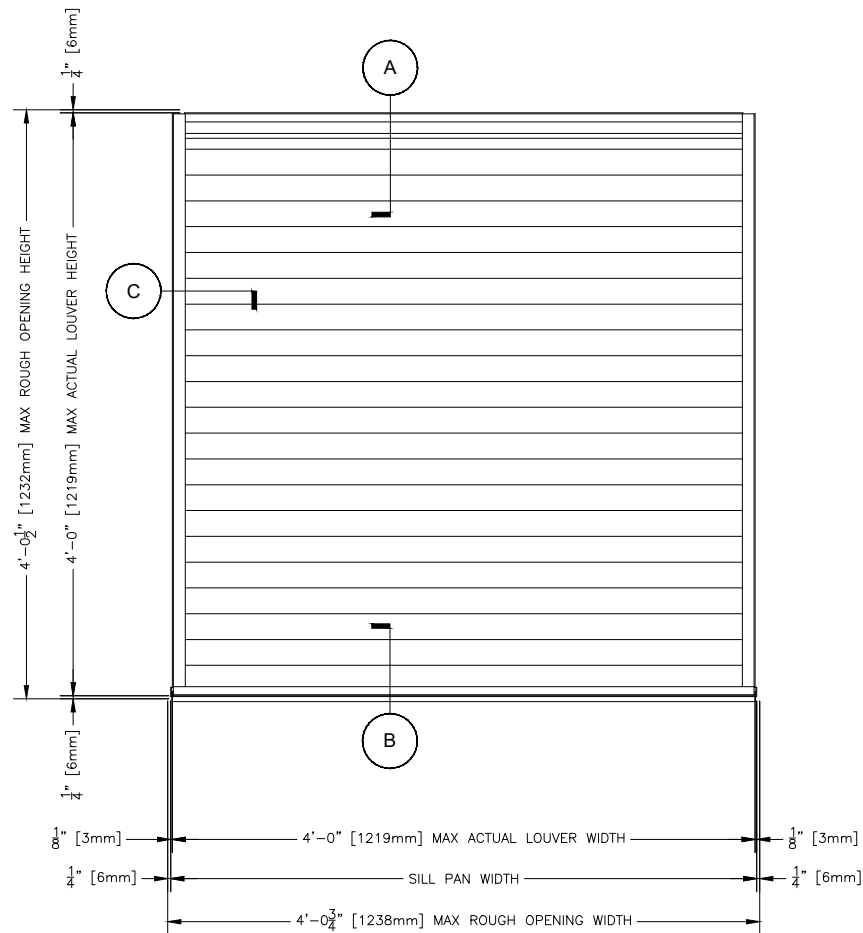
Flange/Sleeve Installation



Channel Installation

Maximum Size and Installation Information

Model EHH-601DE is a Miami-Dade Approved and Florida Product Approved louver and must be installed in accordance with the installation instructions shown herein. Model EHH-601DE is qualified for installation within concrete/masonry, steel stud, structural steel or wood framed building conditions. Model EHH-601DE is structurally calculated to withstand positive and negative wind-loads up to +/-150 PSF. The maximum typical rough opening height is limited to 48.50 in. and the typical rough opening width is limited to 48.75 in.



**Minimum Typical Rough
Opening Size**
12 in. W x 7 in. H

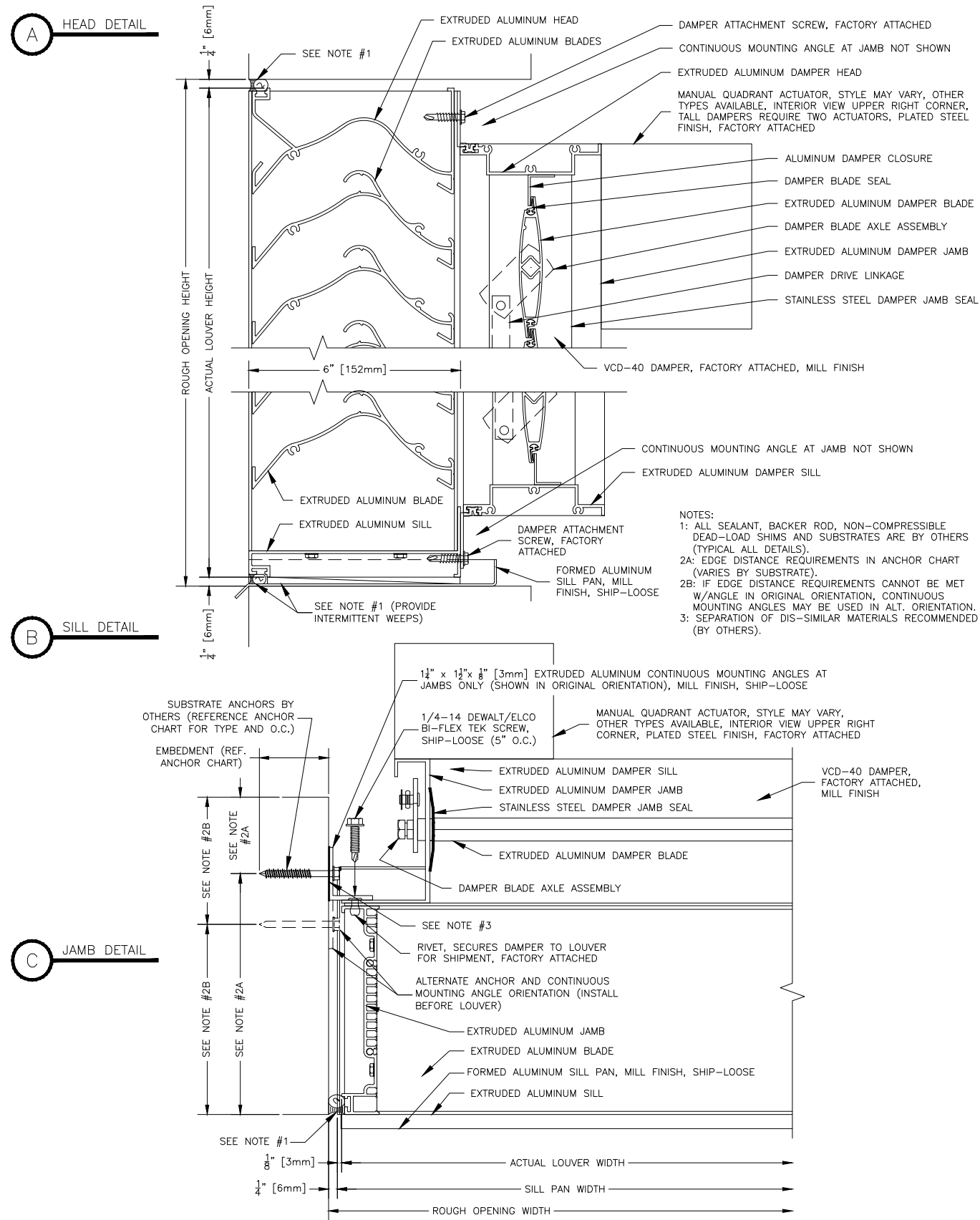
**Maximum Typical
Rough Opening Size**
48.75 in. W x 48.50 in. H

Building Condition/Substrate Limitations

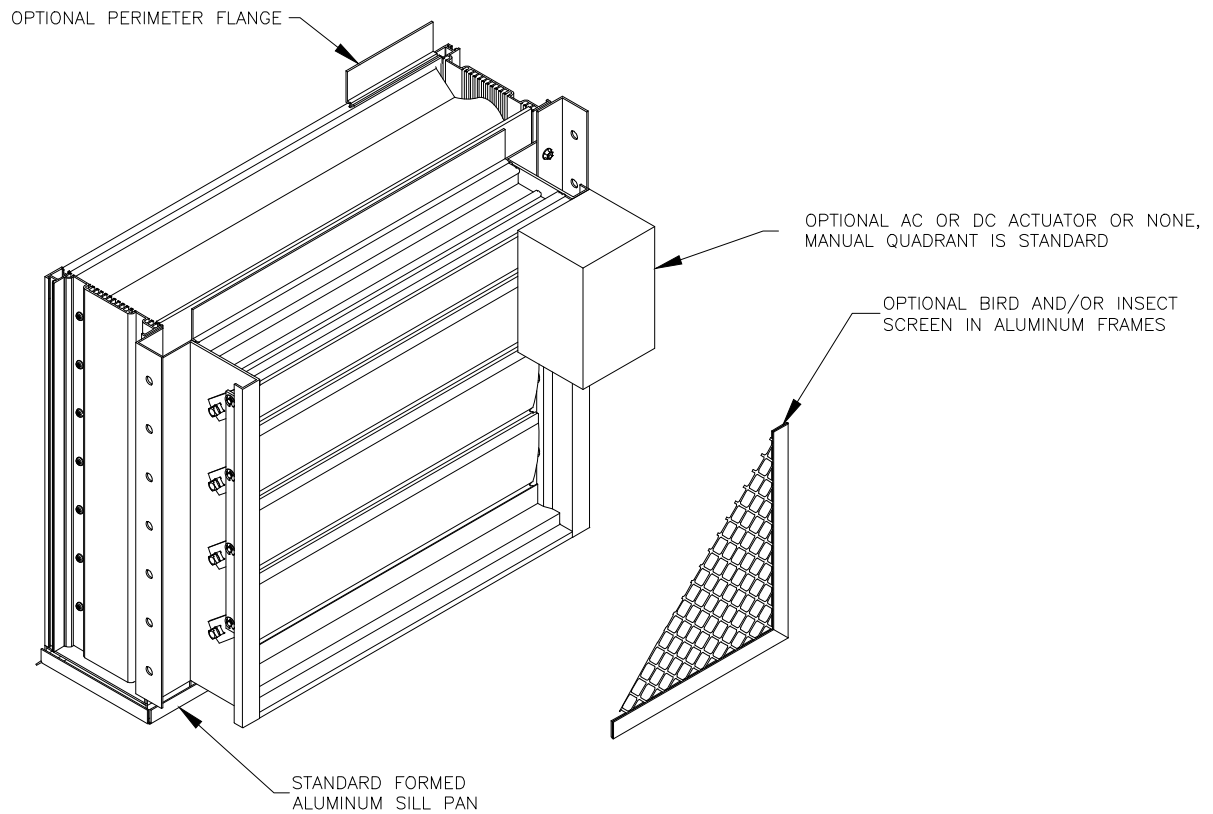
Channel Installation

- All steel substrate should be min. 16 Ga. FY= 33 KSI
- All concrete substrate shall be min. 2000 PSI
- All concrete masonry shall be ASTM C90, Type II, grout-filled
- All wood substrate shall be G= 0.42 density or better
- All aluminum substrate shall be min 0.125 in. thick FY=16 KSI

Channel Installation



Channel Installation



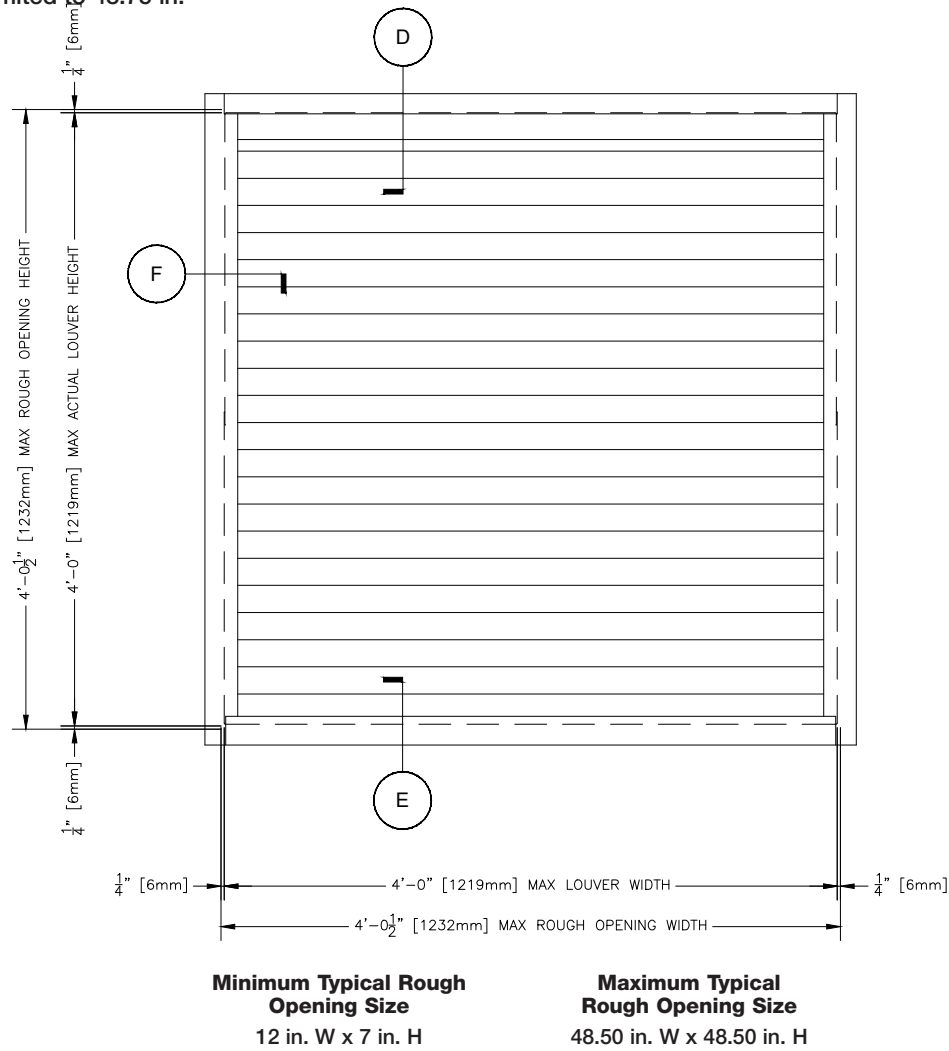
Channel Installation

| SUBSTRATE AND SUBSTRATE FASTENER TABLE | | | | | | | | | | | | | |
|---|---|--------------------------|---|--------|-------|----------|------------|---------------|-----------------|-------------------|--|--|-------|
| SUBSTRATE | | | SUBSTRATE FASTENER | | | | | | | | | | |
| TYPE | THICKNESS MIN | MATERIAL MIN | TYPE (ALL FASTENERS ARE HEX HEAD STYLE) | MAT'L | DIA. | EDGE MIN | EMBED. MIN | SPACING MAX * | SPACING MIN * | HEAD DIA. MIN | ANGLE HOLE ITEM 5, MAX | SUBSTRATE HOLE, MAX | |
| WOOD | 3 | G DF 0.42 | LAG SCREW, 3 INCH MIN LENGTH | 300 SS | 1/4 | 1 1/2 | 23/32 | 5 3/4 | 3 | 1/2 | 5/16 | SEE FASTENER MANUFACTURER INSTRUCTIONS | |
| | | | | | | | | 6 1/4 | | 5/8 | 7/16 | | |
| STEEL | 16 GA (0.056) | Fy 33 KSI Fu 45 KSI | 1/4-20 BOLT W/ NUT | 300 SS | 1/4 | 5/8 | 0.056 | 8 | 1 | 1/2 HEAD 9/16 NUT | 5/16 | SEE FASTENER MANUFACTURER INSTRUCTIONS | |
| | 14 GA (0.070) | | 1/4-14 DEWALT/ELCO BI-FLEX SCREW, 300 SS HEAD & SHANK W/ COATED STEEL TIP | MULTI | | | 0.070 | 6 3/4 | | 1/2 | | | |
| | 12 GA (0.099) | | | | | | 0.099 | 8 | | | | | |
| ALUMINUM | 1/8 | 6063-T5 | 1/4-20 BOLT W/ NUT | 300 SS | 1/4 | 1/2 | 1/8 | 8 | 1 | 1/2 HEAD 9/16 NUT | 5/16 | SEE FASTENER MANUFACTURER INSTRUCTIONS | |
| | | | 1/4-14 DEWALT/ELCO BI-FLEX SCREW, 300 SS HEAD & SHANK W/ COATED STEEL TIP | MULTI | | | 7 | 1/2 | | | | | |
| CONCRETE | VARIES WITH SIZE OF FASTENER USED, SEE FASTENER MANUFACTURER INSTRUCTIONS | 2 KSI | BUILDEX TAPCON, STAINLESS | 410 SS | 1/4 | 1 1/2 | 1 1/2 | 5 1/4 | 2 | AS MANUFACTURED | 1/4 | SEE FASTENER MANUFACTURER INSTRUCTIONS | |
| | | | | | | 2 1/4 | | 6 | | | | | |
| | | | | | | 2 1/2 | | 6 3/8 | | | | | |
| | | | | | | 3 | | 6 3/4 | | | | | |
| | | 3 KSI | BUILDEX TAPCON, STAINLESS | 410 SS | 1/4 | 1 1/2 | 1 1/4 | 4 1/4 | | | | | |
| | | | | | | 2 | | 5 | | | | | |
| | | | | | | 3 | | 6 | | | | | |
| | | | | | | 1 1/2 | | 6 1/4 | | | | | |
| | | 2.3 KSI | DEWALT/ELCO AGGRE-GATOR | 300 SS | 1/4 | 1 1/2 | 1 3/8 | 6 1/2 | | | 3 | | |
| | | | | | | | 1 3/4 | 6 7/8 | | | | | |
| | | 2.9 KSI | DEWALT/ELCO ULTRACON SS4 | 410 SS | 1/4 | 1 | 1 3/4 | 4 3/8 | 3 | | 1/4 | | |
| | | | | | | 2 1/2 | | 8 | | | | | |
| | | 3.4 KSI | DEWALT/ELCO CRETE-FLEX SS4, SMALL HEAD | 410 SS | 1/4 | 1 | 1 3/4 | 6 3/4 | 6 | | 1/4 | | |
| | | | DEWALT/ELCO CRETE-FLEX SS4, FLANGED HEAD | | | | | 8 | | | | | |
| 2.5 KSI | DEWALT/POWERS 316 STAINLESS STEEL WEDGE-BOLT | 316 SS | 1/4 | 1 1/2 | 1 7/8 | 4 5/8 | 1 | 5/16 | | | | | |
| | | | | 2 | | 6 1/8 | | | | | | | |
| | | | | 2 3/4 | | 7 | | | | | | | |
| | | | 3/8 | 1 1/2 | 2 3/8 | 5 1/2 | | | 7/16 | | | | |
| | | | | 2 | | 7 1/4 | | | | | | | |
| | | | | 2 1/2 | | 8 | | | | | | | |
| GROUT FILLED CMU | NOTE 1 | DEWALT/ELCO AGGRE-GATOR | 300 SS | 1/4 | 2 | 2 | 8 | 3 | AS MANUFACTURED | 1/4 | SEE FASTENER MANUFACTURER INSTRUCTIONS | | |
| | NOTE 2 | DEWALT/ELCO ULTRACON SS4 | 410 SS | | 2 | 1 | 3 | | | | | | 2 1/2 |
| NOTE *: MANUFACTURER MAY PROVIDE PILOT HOLES IN MOUNTING ANGLE AT 2" O.C. FOR SUBSTRATE ANCHOR. INSTALLER SHALL USE HOLES WHICH DO NOT VIOLATE SHOWN MIN & MAX SPACING. | | | | | | | | | | | | | |
| NOTE 1: CONCRETE MASONRY (CMU) SHALL BE > THE FOLLOWING: 6" WIDE, CMU CONFORMING TO ASTM C-90 FILLED WITH 4,747 KSI GROUT. | | | | | | | | | | | | | |
| NOTE 2: CONCRETE MASONRY (CMU) SHALL BE > THE FOLLOWING: 6" WIDE, 2 KSI CMU CONFORMING TO ASTM C-90 WITH 1624 KSI GROUT. | | | | | | | | | | | | | |

Flange/Sleeve Installation

Maximum Size and Installation Information

Model EHH-601DE is a Miami-Dade Approved and Florida Product Approved louver and must be installed in accordance with the installation instructions shown herein. Model EHH-601DE with Flange/Sleeve is qualified for installation into any substrate that can withstand the loads transferred by the louver, including but not limited to concrete/masonry, aluminum, steel stud, structural steel or wood framed building conditions. Model EHH-601DE is structurally calculated to withstand positive and negative wind-loads up to +/-150 PSF. The maximum typical rough opening height is limited to 48.50 in. and the typical rough opening width is limited to 48.75 in.



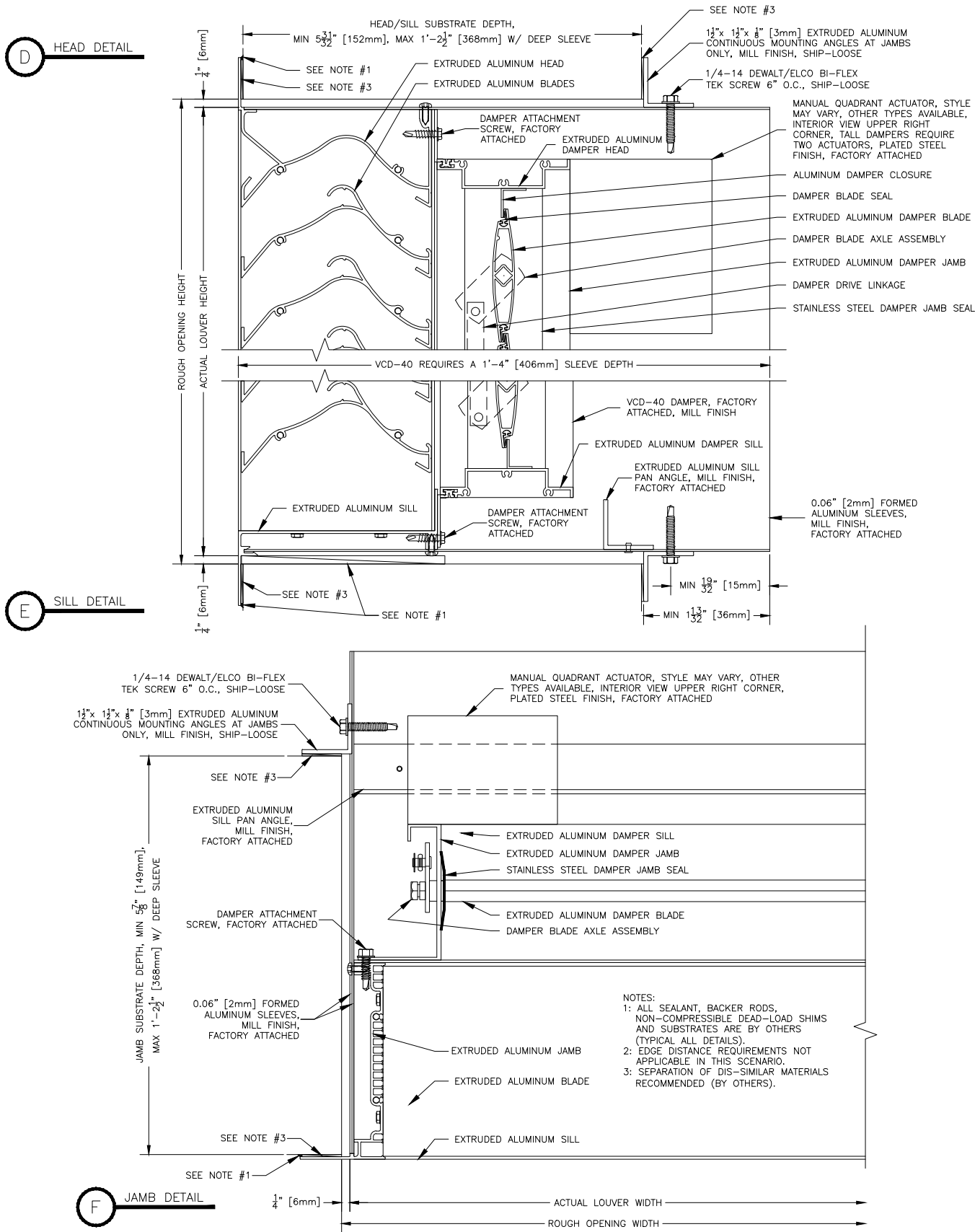
Building Condition/Substrate Limitations

Flange/Sleeve Installation

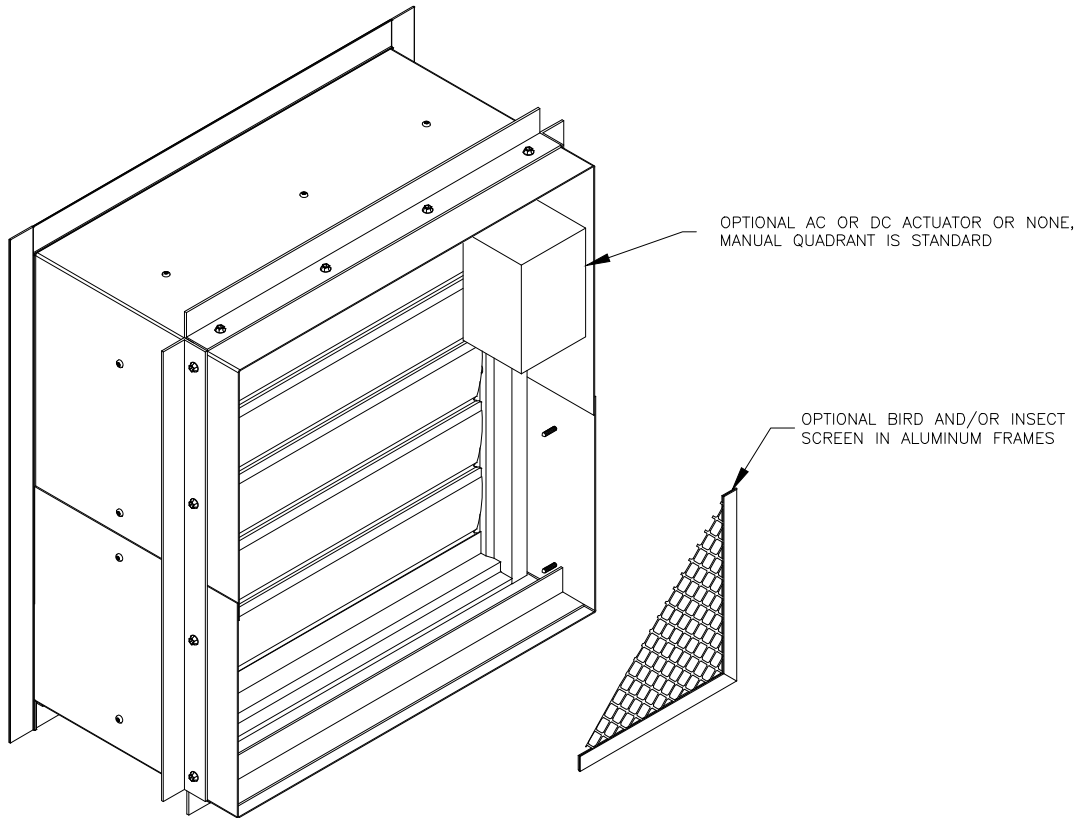
- Any substrate acceptable that is capable of withstanding imposed loads.



Flange/Sleeve Installation



Flange/Sleeve Installation



Our Commitment

As a result of our commitment to continuous improvement, Greenheck reserves the right to change specifications without notice.

Product warranties can be found online at Greenheck.com, either on the specific product page or in the literature section of the website at Greenheck.com/Resources/Library/Literature.

