

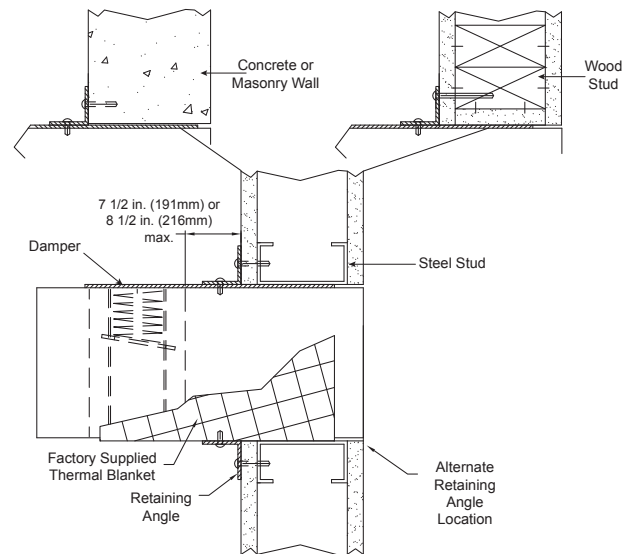
Approved installations for curtain fire dampers

- 1) Through the grille access and
- 2) Installation in continuing duct.

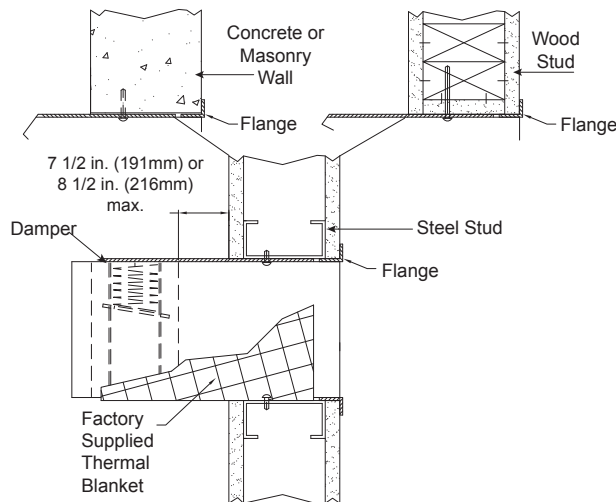
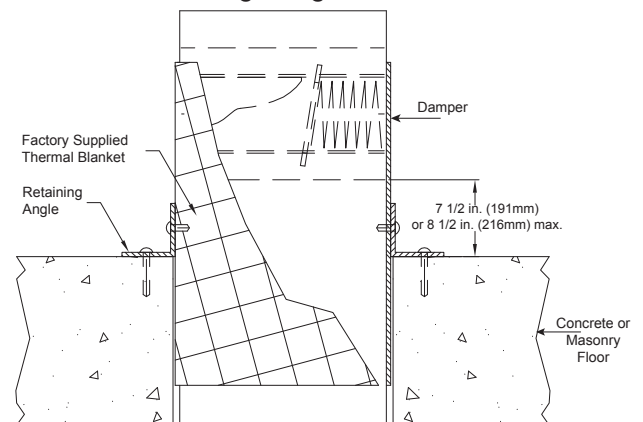
The following maximum distances outside the barrier apply:

- Steel stud and masonry barriers:
 - 8½ in. (216mm) provided the width and height of the damper are both 24 in. (610mm) or less and the damper sleeve is 20 gauge
 - 7½ in. (191mm) in all other instances
- Wood stud walls: 6½ in. (165mm)

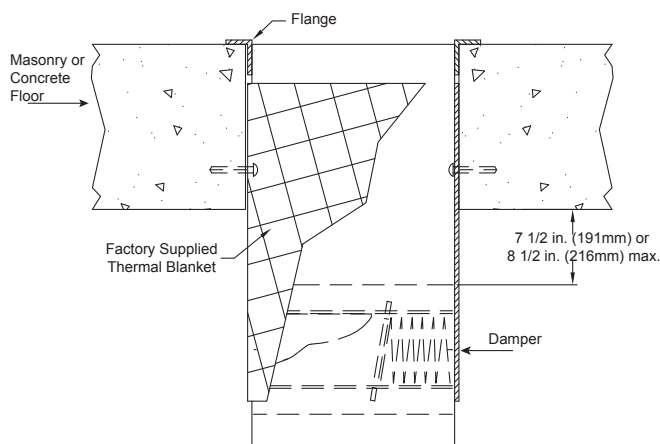
For access to inspect the damper and fusible link, refer to the requirements of NFPA 90A.



Type A- Vertical Mount, Duct Terminates Single Angle Method

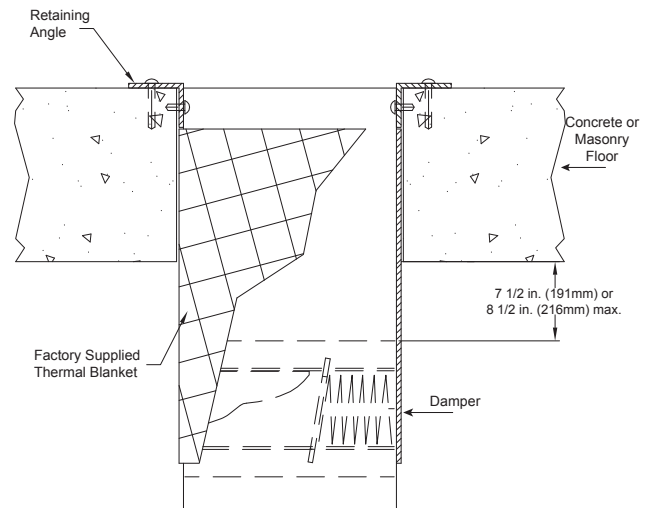


Type A- Vertical Mount, Duct Terminates Flange Method



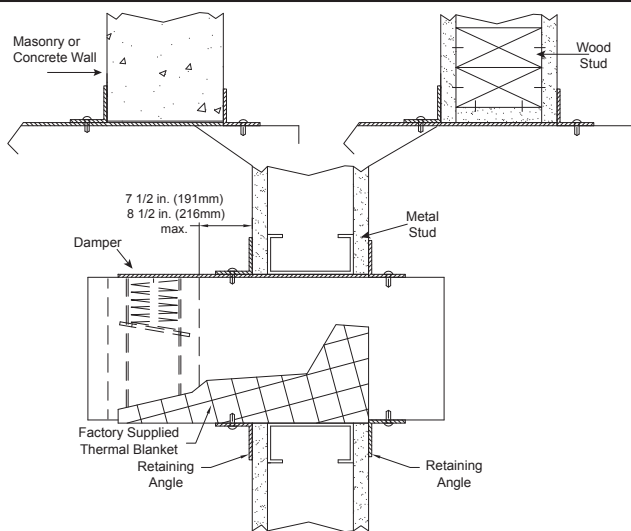
Type A - Horizontal Mount Below Floor/Wall, Duct Terminates Flange Method

Type A - Horizontal Mount Above Floor/Wall, Duct Terminates Single Angle Method

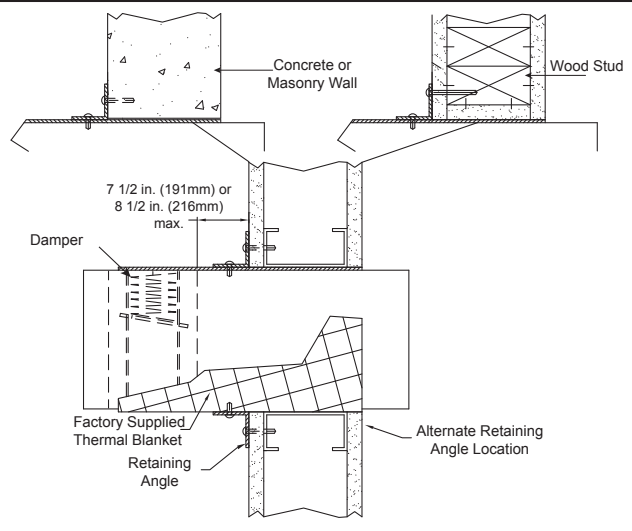


Type A - Horizontal Mount Below Floor/Wall, Duct Terminates Single Angle Method

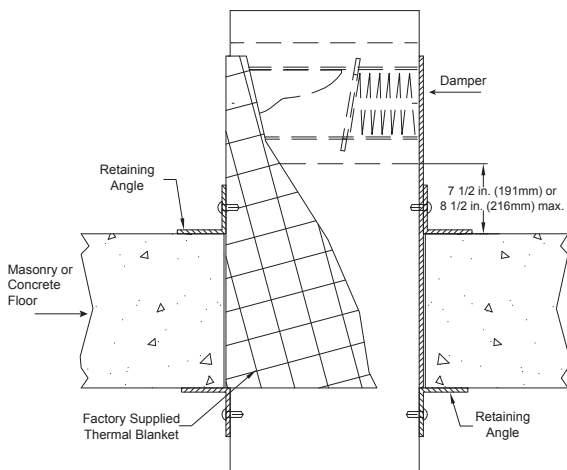
Type A cont....



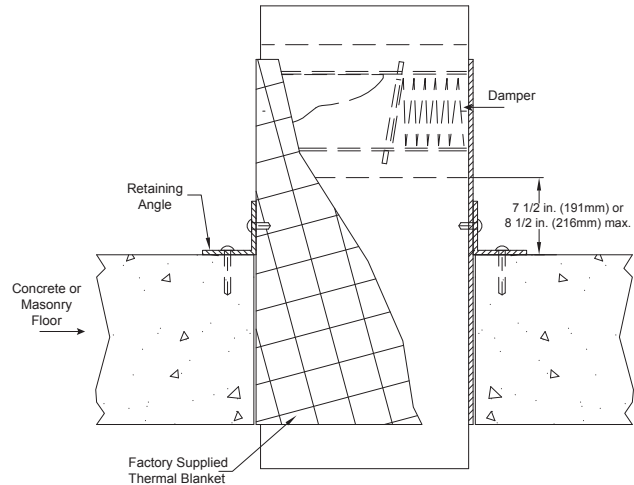
Type A- Vertical Mount, Thru Duct with Two Retaining Angles



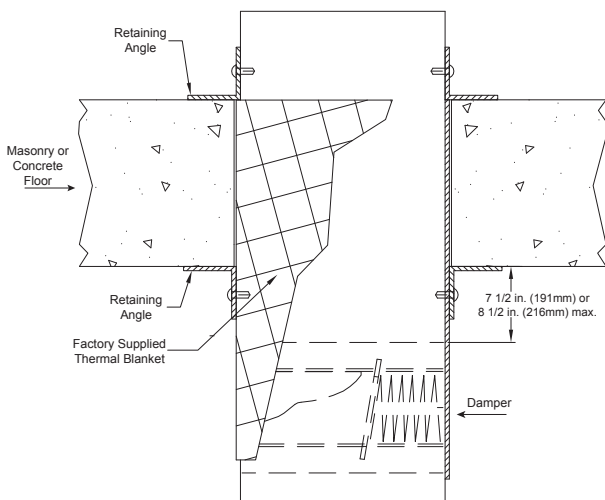
Type A- Vertical Mount, Thru Duct with Single Retaining Angle



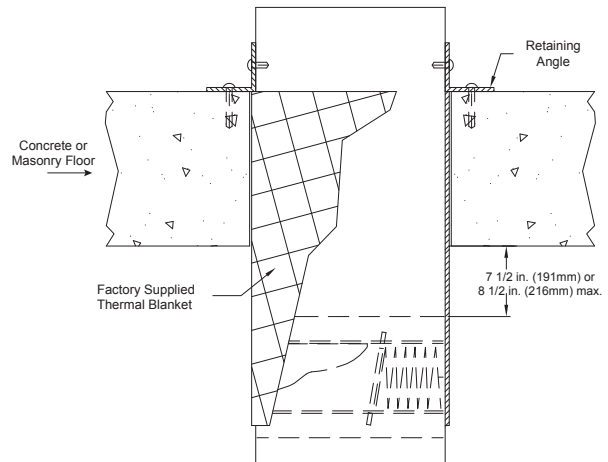
Type A - Horizontal Mount Above Floor/Wall, Thru Duct with Two Retaining Angles



Type A - Horizontal Mount Above Floor/Wall, Thru Duct with Single Retaining Angle

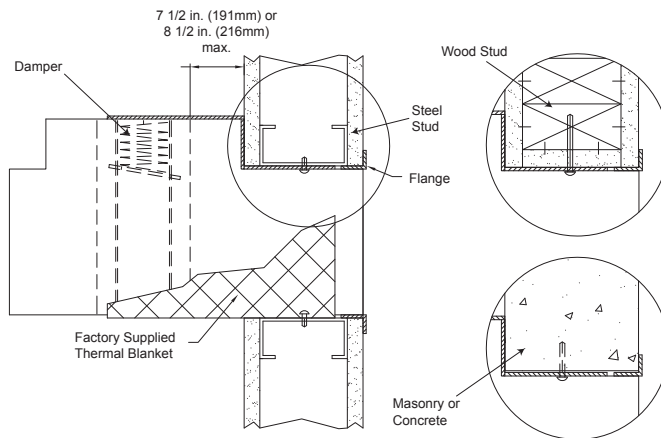


Type A - Horizontal Mount Below Floor/Wall, Thru Duct with Two Retaining Angles

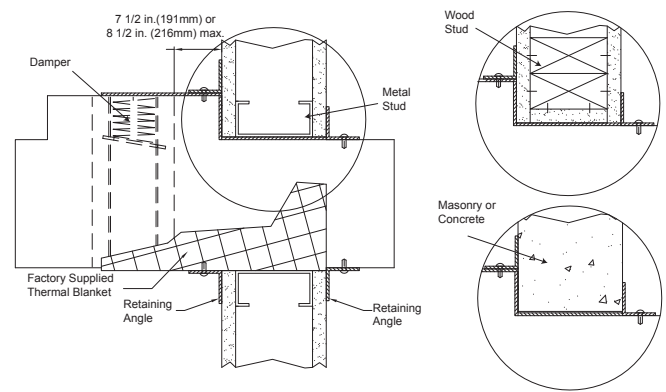


Type A - Horizontal Mount Below Floor/Wall, Thru Duct with Single Retaining Angle

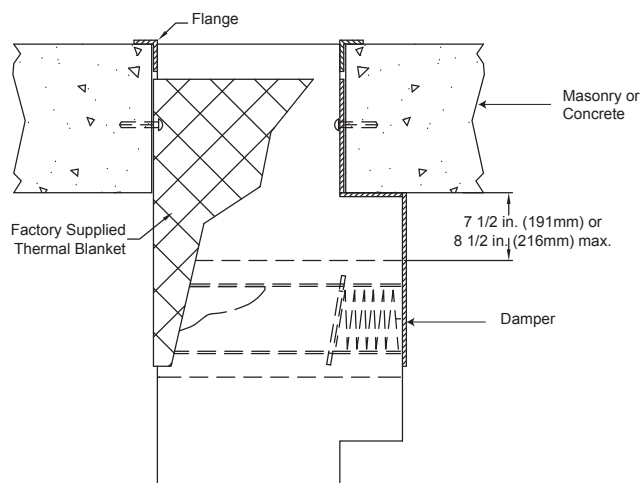
Type B2



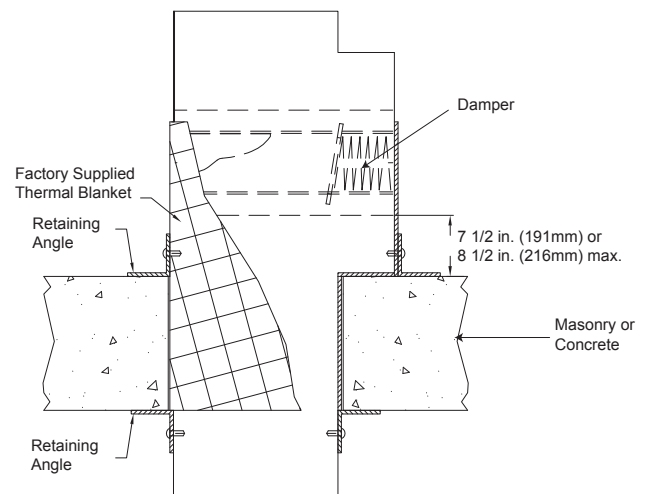
Type B2- Vertical Mount, Duct Terminates Flange Method



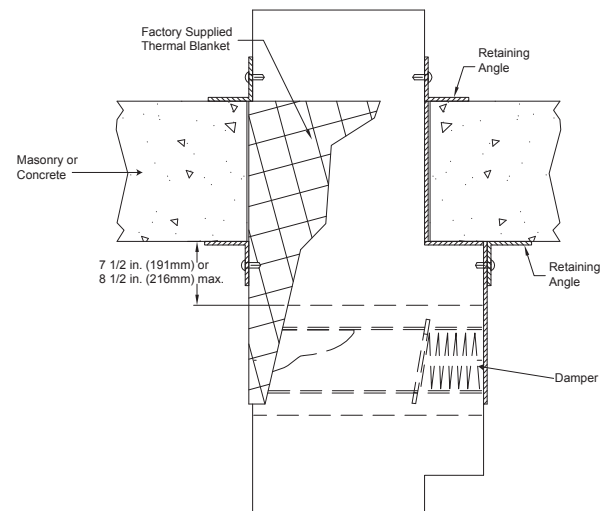
Type B2- Vertical Mount, Thru Duct with Two Retaining Angles



Type B2 - Horizontal Mount Below Floor/Wall, Duct Terminates Flange Method

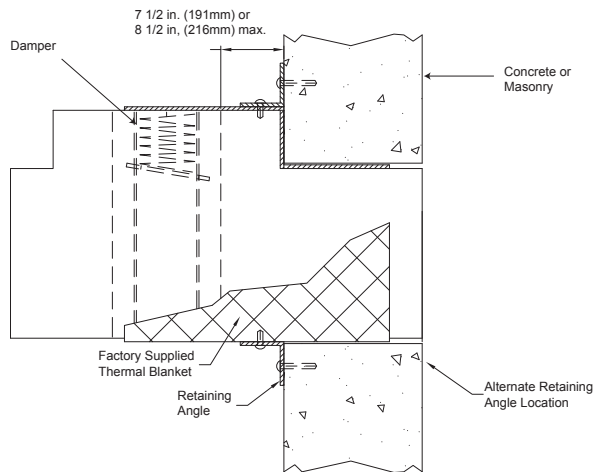


Type B2 - Horizontal Mount Above Floor/Wall, Thru Duct with Two Retaining Angles

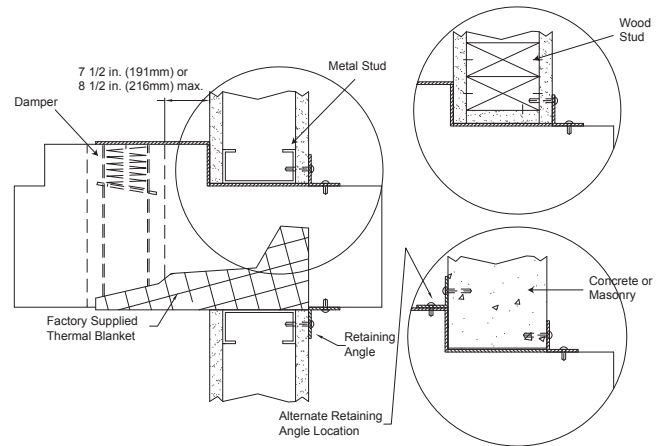


Type B2 - Horizontal Mount Below Floor/Wall, Thru Duct with Two Retaining Angles

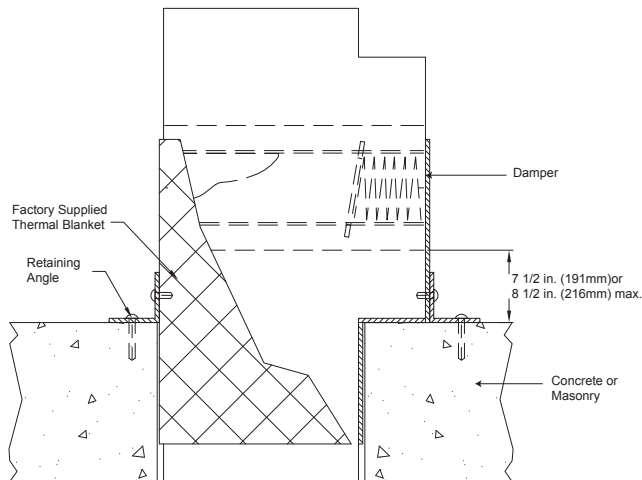
Type B2 cont....



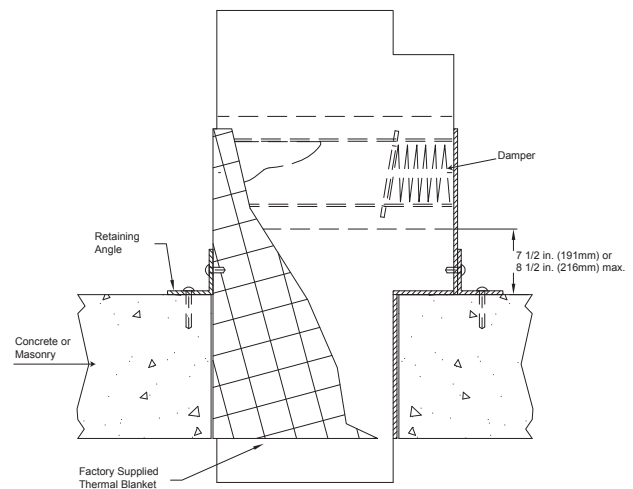
Type B2- Vertical Mount, Duct Terminates Single Angle Method



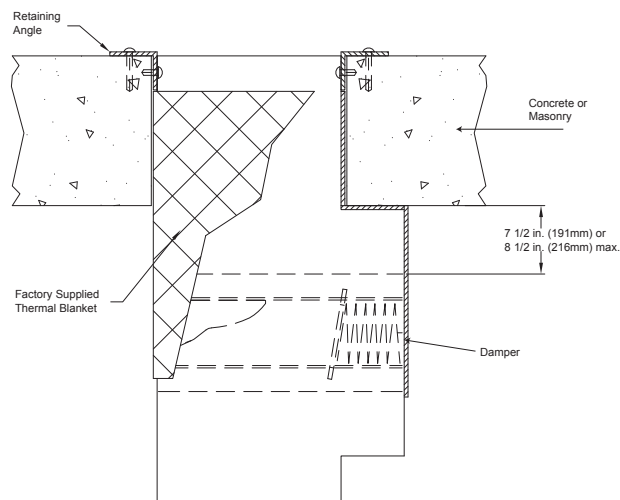
Type B2- Vertical Mount, Thru Duct with Single Retaining Angle



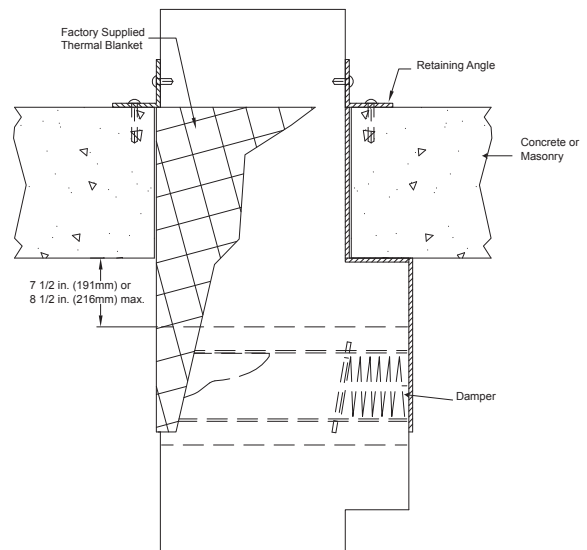
Type B2 - Horizontal Mount Above Floor/Wall, Duct Terminates Single Angle Method



Type B2 - Horizontal Mount Above Floor/Wall, Thru Duct with Single Retaining Angle



Type B2 - Horizontal Mount Below Floor/Wall, Duct Terminates Single Angle Method



Type B2 - Horizontal Mount Below Floor/Wall, Thru Duct with Single Retaining Angle

Notes

Our Commitment

As a result of our commitment to continuous improvement, Greenheck reserves the right to change specifications without notice.

Product warranties can be found online at Greenheck.com, either on the specific product page or in the literature section of the website at Greenheck.com/Resources/Library/Literature.

